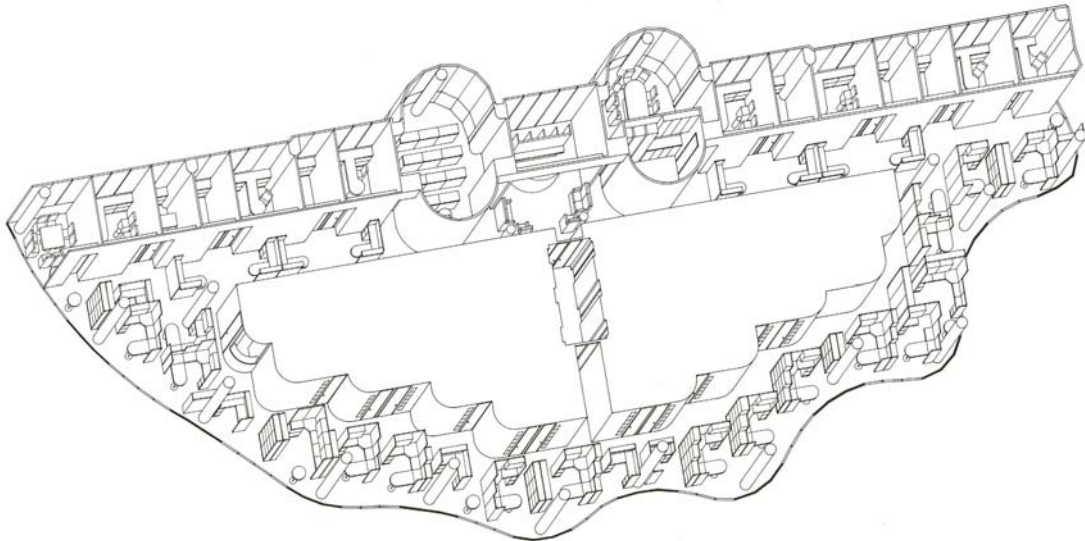




**ARCO TRANSPORTATION COMPANY
CORPORATE HEADQUARTERS RELOCATION,
LONG BEACH, CALIFORNIA**

Katie Powellⁱ, Project Designer, Kaneko/Laff

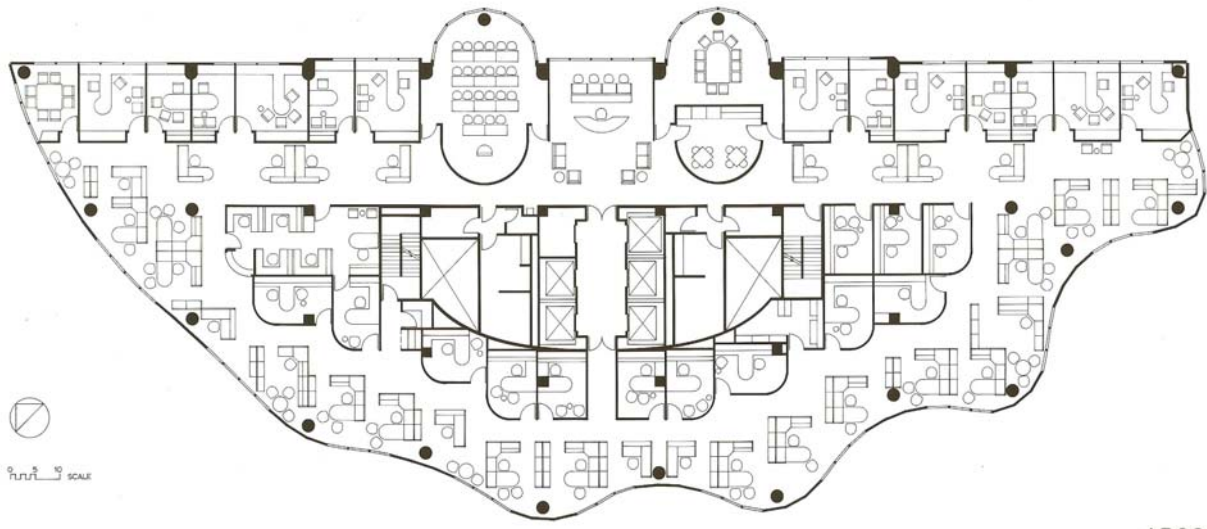
The project was to relocate personnel for Arco Transportation from five different existing building sites into six floors of the newly build tower, Arco Center, in Long Beach. The penthouse held executive suites, including the legal and accounting staff. The five typical floors below, totaling 90,000 SF, would also include new personnel facilities for interviews and testing, large presentation rooms and multi-media rooms. Floors to sublet, in between, would be designed to mirror the typical floor plan of Arco, so that eventual expansion would be expedited.



The design goals were to capture the views of the Long Beach Harbor and surrounding area for the entire staff, using the trendiest lighting and furnishings. A clear delineation of secured areas and those areas open to visitors was required, designed in such a way that security was not apparent to visitors. The building provided a challenge both in terms of the undulating curtain wall of high rise, shown in the photo top left, and the unusual requirements for both fire and handicapped design code changes.

As always, Arco requested a beautiful space with state of the art design!

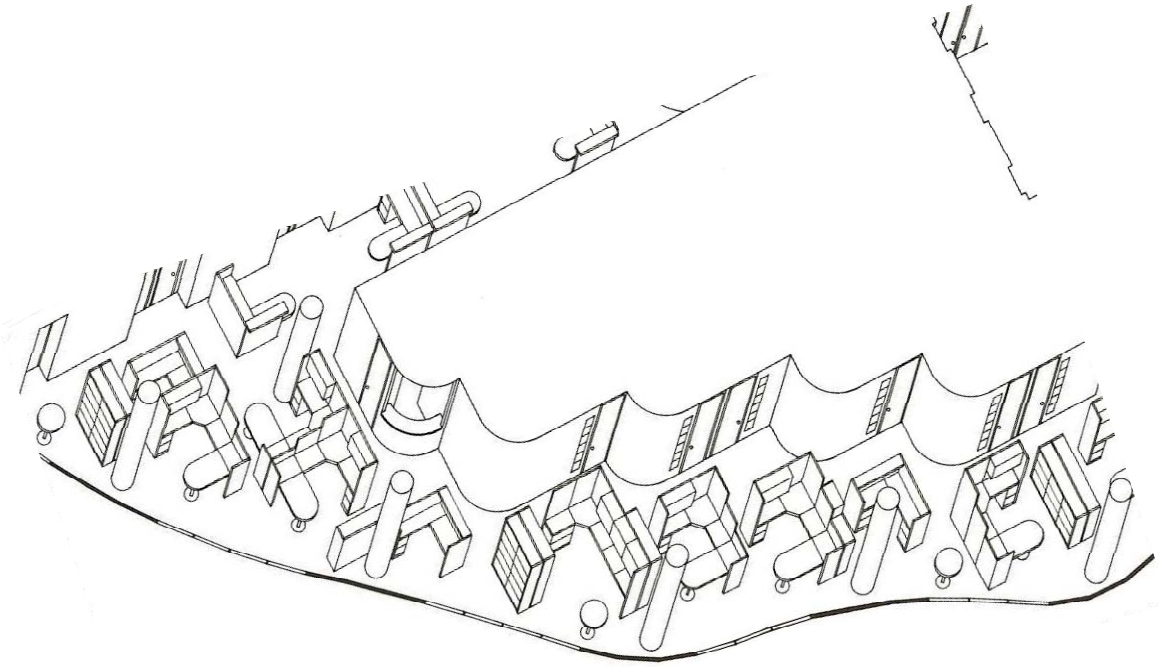
The design solution involved a clear statement about privacy hierarchies, with conferencing, training, testing and coffee/lunch facilities located adjacent to the elevator lobby and away from the views. Upper level managers on typical floors were aligned on either side of the conference centers on either side of the elevator lobby, while the pattern of the workstations dissolved into a seemingly random array along the irregular glass line overlooking the Pacific Ocean. Middle level managers were clustered around the core



TENTH FLOOR (TYPICAL)

ARCO
LONG BEACH

with interior glass windows, providing area for lower level workers to float near the windows in a random pattern, ensuring all could see the views. Employee task meetings were encouraged in smaller open conference areas around the perimeter. The design solution responded to the undulating wall with interior curves and circular furnishings.



ⁱ Katie Powell was using her maiden name, Debra Beck, responsible for Programming, block plans, space planning, and conceptual design. George Kaneko was the senior associate on this project.